

A PLANT
DISEASE THAT
KILLS CITRUS
TREES HAS
BEEN FOUND
IN CALIFORNIA.
THERE IS NO
CURE AND
YOUR CITRUS
TREES ARE AT
RISK. WORKING
TOGETHER,
WE CAN
SAVE YOUR
COMMUNITY'S
CITRUS.

 @CaliforniaCitrusThreat

 @CitrusThreat

Learn more about the Asian citrus
psyllid and HLB, and see photos at
CALIFORNIACITRUSTHREAT.ORG

Report suspicious pests and plant
disease to the California Department of
Food and Agriculture at **800.491.1899**

For Asian citrus psyllid treatment
information from the University of
California, visit UCANR.edu/sites/ACP

View quarantine information and maps
at CDFA.ca.gov/plant/ACP



**SAVE YOUR
COMMUNITY'S
CITRUS**



! DISEASE

🐛 DANGEROUS PEST

✓ SOLUTION

HUANGLONGBING (HLB)

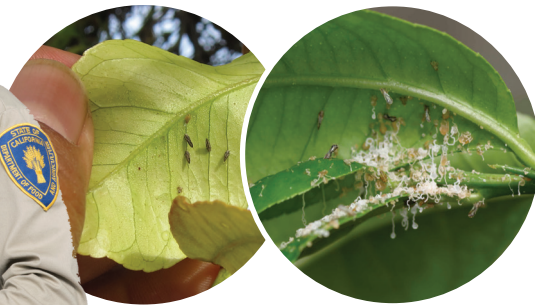
- **It kills citrus trees** and there is no cure.
- **Diseased trees** produce lopsided, bitter fruit, and eventually die.
- **HLB has been found** in Southern California, Florida, Texas and other countries, including Mexico.
- **Removal of HLB-infected trees** is critical to protect the health of your other citrus trees, your neighbors' trees and your community's citrus.
- **HLB is also called** citrus greening disease.

ASIAN CITRUS PSYLLID

- **HLB is spread** by an insect called the Asian citrus psyllid, which can transfer the disease from tree to tree as it feeds on citrus leaves.
- **The Asian citrus psyllid** is small, about the size of an aphid.
- **Eggs are laid** on small, tender new leaves. Young psyllids are yellow-orange and produce a white, waxy substance.
- **The insect can be controlled.** Visit UCANR.edu/sites/ACP for treatment recommendations, or talk to your local nursery about products available.
- **The best way to protect** against the disease is to find and stop the pest from spreading.

WE ALL PLAY A CRITICAL ROLE

- **Inspect your citrus trees** monthly for the pest and disease, and report findings by calling 800-491-1899.
- **Do not move citrus plants**, leaves or foliage into or out of your area, or across state or international borders.
- **When grafting**, only use registered budwood that comes with source documentation.
- **Cooperate with agriculture crews** placing traps, inspecting trees and treating for the pest.
- **Visit your local nursery or garden center** to learn what products can help protect your tree from the Asian citrus psyllid.
- **Control ants** on your citrus trees. Ants interfere with beneficial insects and actually protect the Asian citrus psyllid. Talk to your local nursery about ant bait that can help. If you no longer wish to care for your citrus tree, consider removing it so it does not become a host to the pest and disease.



**WORKING TOGETHER, WE CAN
SAVE YOUR COMMUNITY'S CITRUS**